

The archive player

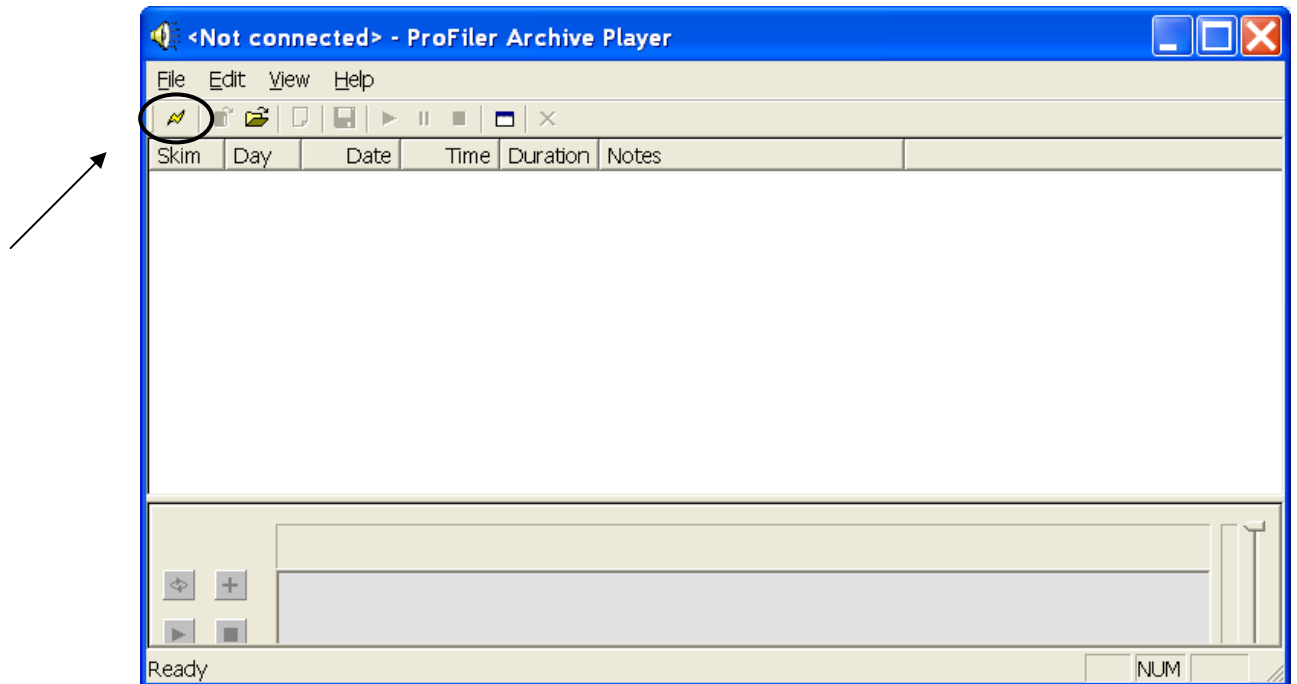
KTRU maintains an audio archive of all programming on KTRU for roughly 90 days. This archive is available to DJs for the purpose of critiquing their on-air performance; you can also request a review from another dj or staff member if so desired.

This archive is intended solely as a non-commercial, non-profit educational tool to be used in a **NON-PUBLIC** manner only. Access to the archives does NOT give you permission to make any portions of the archive available to anyone outside of KTRU. You may not share the user name or password with anyone. You may not post material on external sites, share files, or in any way make this material available to outside parties. It is very easy for us to track this behavior. Evidence of the sharing of the archive with non-ktru entities, or username/password sharing will lead us to IMMEDIATELY DISABLE the archive. Don't be the person that ruins things for everyone.

Due to copyright laws, KTRU must enforce this policy, with no exceptions. Further, in an effort to prevent abuse, KTRU will periodically change the password to the archive. Anyone leaking this material or violating the terms above will be fired. We can't have the station put at risk like that.

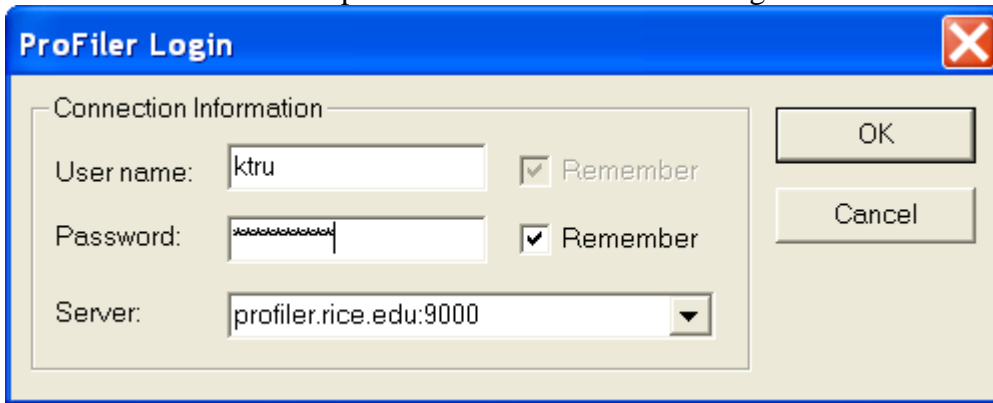
Download the archive player from <http://www.telos-systems.com/?/profiler/default.htm> . This is a PC only application. Copies of the application are installed on both computers in the newsroom.

Below is a screen shot of the opened archive player.



Click on the lightning bolt to initiate the connection.

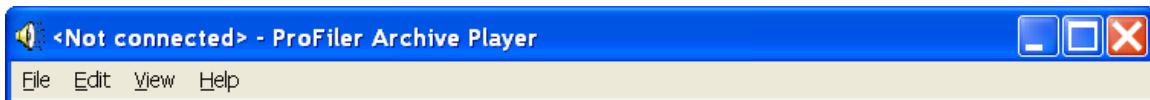
The login screen will appear. Enter the information below, and then click OK. You will need to obtain the current password from the station manager.



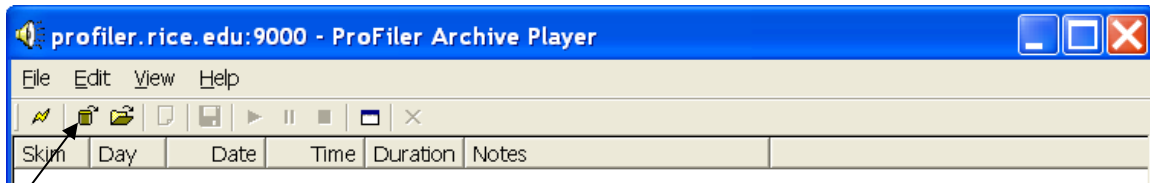
The image shows a 'ProFiler Login' dialog box with a blue title bar and a close button (X) in the top right corner. The dialog is divided into a 'Connection Information' section and two buttons: 'OK' and 'Cancel'. The 'Connection Information' section contains three fields: 'User name:' with the text 'ktru', 'Password:' with a masked password '*****', and 'Server:' with a dropdown menu showing 'profiler.rice.edu:9000'. Each of the first two fields has a 'Remember' checkbox checked to its right.

When you are connected, the top of the screen changes.

Not connected.



Connected.



Click the can with the arrow. This will allow you to choose between the “KTRU Skimmer” and “Full Archive”, date(s) and time(s). When the window is populated with segments, you can either listen to them or double click them to add to a cue window. If you like, you may save the segments to your computer by clicking the floppy disk icon. The files will, by default save as “.ap3” files which may be played in your archive player. Alternatively, you may change the extension to .mp3, which will allow you to play the files in almost any audio player.

Full Archive = A copy of all audio on KTRU

KTRU Skimmer = Records only when the control room DJ microphone is activated